

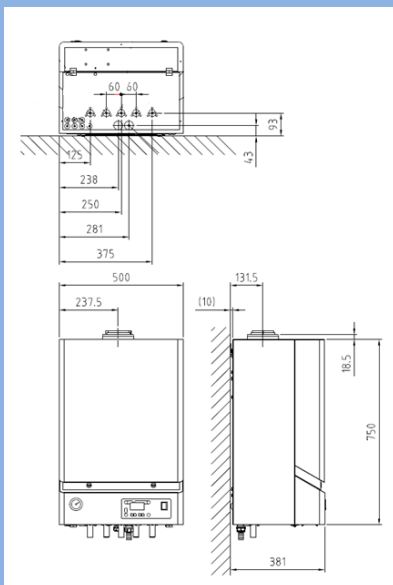


ProCon Wall Mounted Condensing Range

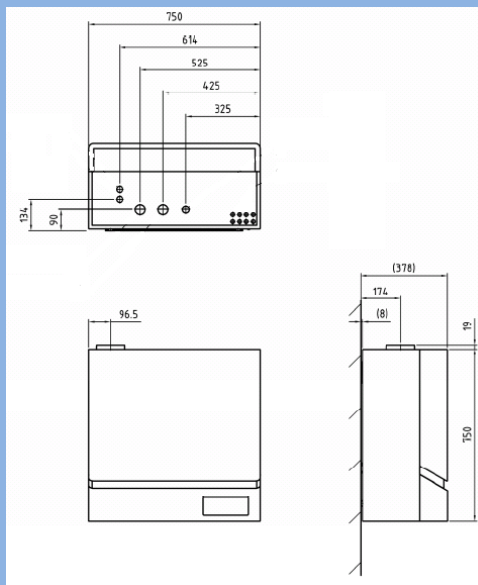


The ProCon Wall mounted gas fired range are available in a number of power outputs and configurations from 16kW to 75kW. System and Combi options are available. Using a helical tube stainless steel heat exchanger and a fully modulating radiant premix burner, these boilers attain high efficiency (up to 108.8%NET) combined with low emissions.

ProCon 16 – 47



ProCon 75



ProCon 77



The ProCon H range of appliances are designed to be applied to systems requiring direct on boiler weather compensated heating and priority hot water production via a separate high recovery calorifier/cylinder and diverter valve. (All Sizes)

The ProCon S range of appliances are designed to be applied to systems requiring direct on boiler weather compensated heating and priority on demand hot water production via an internal plate heat exchanger. (27 & 47 Only)

The ProCon HS range of appliances are designed to be applied to systems requiring direct on boiler weather compensated heating and priority hot water production via a separate high recovery Calorifier/Cylinder, where the diverter valve controlling the production of hot water is within the boiler case. (16 & 27 Only)

The ProCon HS+ can be supplied complete with an integrated high recovery calorifier for simplified and attractive installation housed within and extended case. The high recovery calorifer can be located beneath of adjacent to the boiler. (Further information available via the website www.mhgheating.co.uk) (27 Only)

The ProCon HM appliance is supplied complete with and integral RVA47 Cascade Manager capable of controlling an additional 11 ProCon boilers. Each subsequent boiler must be fitted with an OCI420 Communication Clip. (75 & 77 Only)

MHG Heating Ltd, Unit 4 Epsom Downs Metro Centre,
Waterfield, Tadworth, Surrey, KT20 5LR.

Tel: 0845 644 8802 Fax: 0845 644 8803 Email: info@mhgheating.co.uk





Technical Details



Technical Data		Units	16 H & HS	27 H & HS & (S)	47 H & (S)	75 & 77 H & HM
Nominal Heat Input Net	Min/Max	kW	4.0/15.0	6.5/25.0	12.0/45.0	15.0/70.0
Nominal Heat Input Gross	Min/Max	kW	4.4/16.5	7.2/27.5	13.2/49.5	16.5/77.0
Carbon Emissions 100% Of max Output	G20	kgC/kWhr	0.061	0.061	0.061	0.060
	G31	kgC/kWhr	0.078	0.078	0.078	0.077
Carbon Emissions 30% Of max Output	G20	kgC/kWhr	0.055	0.055	0.055	0.055
	G31	kgC/kWhr	0.070	0.070	0.070	0.070
SEDBUK Rating			B	B	B	B
Operating Efficiency (40°C/30°C)		%	108.8	108.7	108.5	108.5
Nominal Heat Output (50°C/30°C)	Min/Max	kW	4.3/15.8	7.0/26.2	12.9/47.0	16.0/74.6
Design Flow Rate (50°C/30°C)		Ltr/sec	0.188	0.312	0.560	0.880
Nominal Heat Output (80°C/60°C)	Min/Max	kW	3.7/14.5	6.3/24.2	11.7/43.5	14.5/67.8
Design Flow Rate (80°C/60°C)		Ltr/sec	0.172	0.288	0.519	0.807
Hot Water Generation Output		kW		(31.3)	(45)	
Hot water flow rate @ DT 30°C		Ltr/min		(15)	(20)	
Min Flow Rate For H/W Activation		Ltr/min		(3)	(3)	
Minimum Flow Rate		Ltr/sec	0.125	0.246	0.373	0.592
Residual Head from In-built Pump		m/W.C	3.7	1.3	0.5	0.75
Maximum Input Gas Rate	G20	m³/hr	1.55	2.55	4.65	6.91
	G31	m³/hr	0.57	1.00	1.72	2.60
Gas Inlet Pressure	Min/Max	Mbar	18.0/50.0	18.0/50.0	18.0/50.0	18.0/50.0
Maximum Flue Gas Volume	(Hot)	m³/hr	21.36	40.81	64.08	96.84
Available Fan Pressure		Pa	400	400	400	400
Maximum Water Pressure	(Hot)	bar	3.0	3.0	3.0	3.0
Minimum Water Pressure	(Cold)	bar	0.8	0.8	0.8	0.8
Maximum Flow Temperature		°C	90	90	90	90
Power Supply (230 V / 50 Hz)		Amps	5	5	5	5
Max Power Consumption		Watts	122	129	145	250
Water Content		Ltrs	4	5.2	5.2	8.2
Lift Weight (Dry)		kg	43.0	43.0	43.0	70.0



MHG Heating Ltd, Unit 4 Epsom Downs Metro Centre,
Waterfield, Tadworth, Surrey, KT20 5LR.

Tel: 0845 644 8802 Fax: 0845 644 8803 Email: info@mhgheating.co.uk

